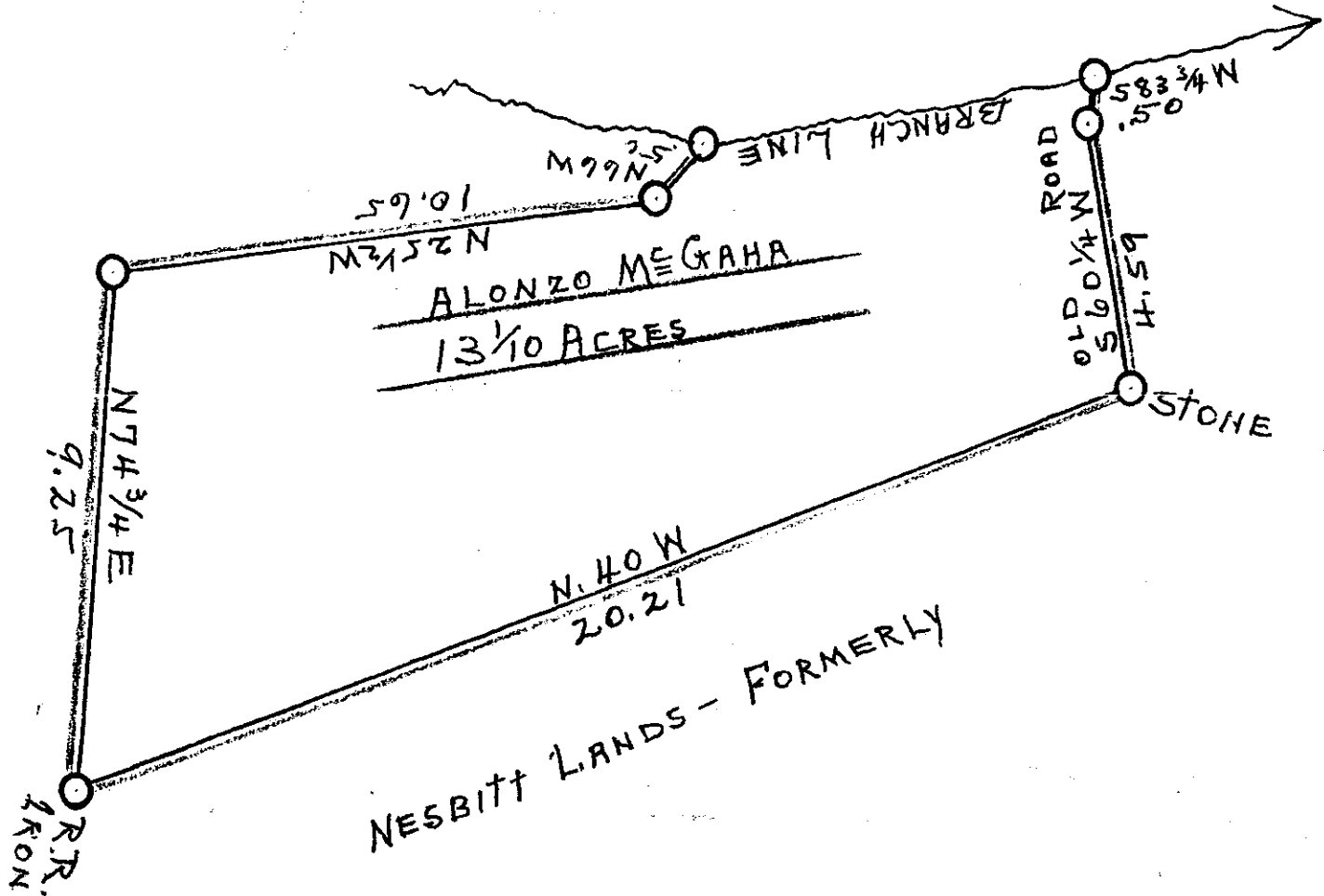


Plat Book PP, Page 64

SCALE: 4 CHAINS PER INCH



State of South Carolina
County of Greenville

This plat represents a certain piece, parcel or tract of land situate and being in Grove Township, State and County aforesaid containing thirteen and on tenth (13-1/10) acres, more or less, belonging to Alonzo McGaha.

Plat made June, 24, 1958

W. J. Perkins

JUN 30 1958

JUN 30 1 53 PM 1958

OLLIE FARNSWORTH
R. M.C.

509

362

PP - 64

362 Filed This 30 day of June 1958
and Recorded in PP - 64
Ollie Farnsworth
Register Meane Conveyance Greenville County, S. C.